



## PREMIUM AFTERMARKET WIND DEFLECTORS

### Chrysler PT Cruiser wind deflector fitting instructions

Product No: 08.03.02.01



Product No: 08.03.02.01



#### What is in the box

- 1 x Wind deflector
- 2 x Wind deflector plugs (left& right)
- 1 x Installation manual

#### Tools required

- 1 x Marker
- 1x 13mm drill bit



## PREMIUM AFTERMARKET WIND DEFLECTORS

### STEP 1

Open the top and fold the seats forward then slide the wind deflector rear pins in the opening of the rear seats.



### STEP 2

Lift the seatbelt cover upwards.





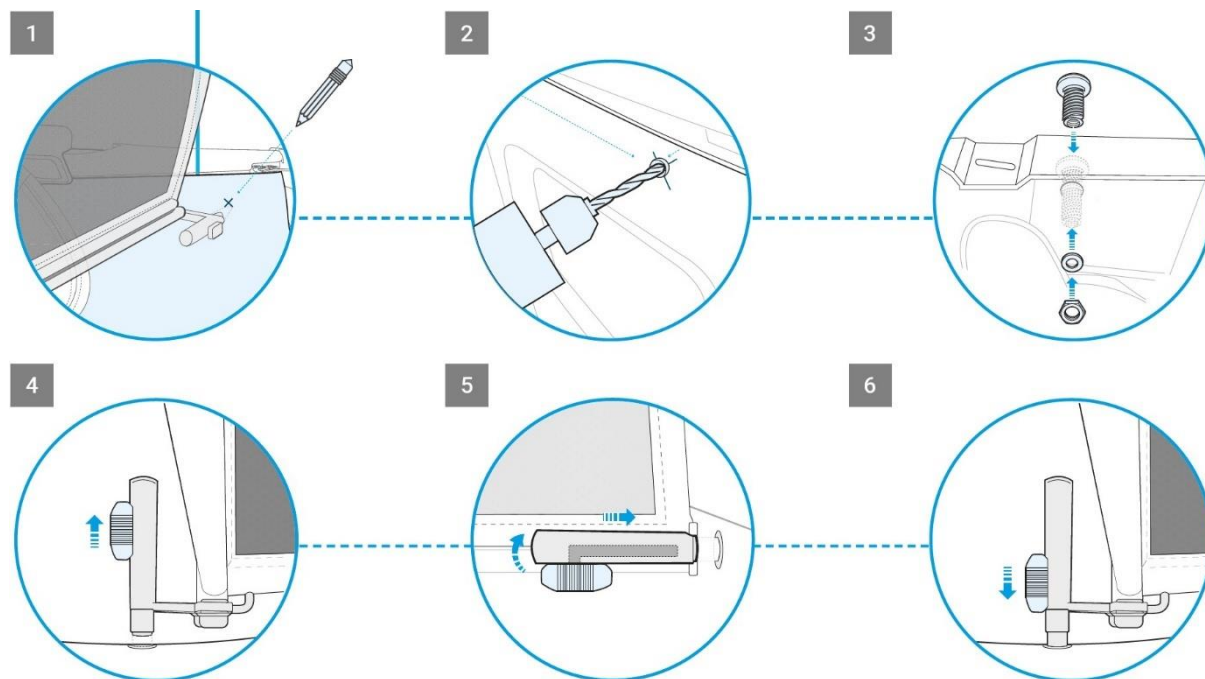
## PREMIUM AFTERMARKET WIND DEFLECTORS

### STEP 3

Hold the wind deflector in the car and mark the position of the side pins on your side panel. Drill a 12mm hole on the marked position. The side panels are made of plastic so there not much force needed.



## PREMIUM AFTERMARKET WIND DEFLECTORS



### STEP 4

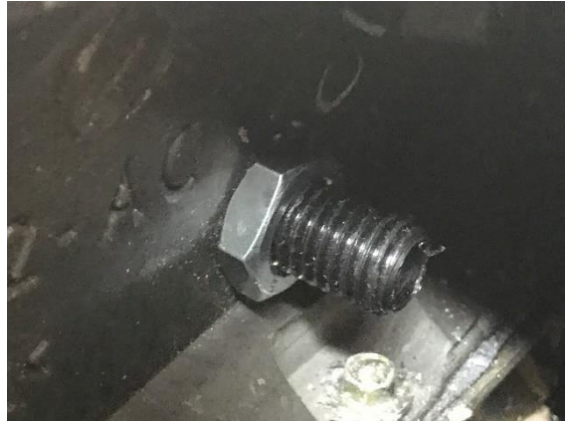
Push the plug through the hole and fixate the plug with the supplied nut and washer. **Don't tighten the plugs to much** since there are made of plastic the may break if you tighten them with to much force.







## PREMIUM AFTERMARKET WIND DEFLECTORS



### STEP 5

Reinstall the seatbelt covers and slide the wind deflector into the backseat and click the pins of the wind deflector into the installed plugs.



### STEP 6

Go out for a test drive and enjoy you APERTA wind deflector!

